

**NEW!**

# Current Sense Transformers ST511TCB



- Small surface mount current sensors
- Sensed current up to 20 A; Frequency range up to 1 MHz
- Very low primary DC resistance
- 500 Vrms, one minute isolation (hipot) between windings
- Designed for:
  - Continuous AC current monitoring in switched-mode power supply; Overload and short-circuit protection; Current measurement in traction motor and battery management systems in conventional and xEV (EV, HEV, FCEV) vehicles.
- Can also be used in 48 V vehicle electrical systems

| Part number <sup>1</sup> | Turns (N)<br>pri:sec | Inductance <sup>2</sup><br>min (mH) | DCR max<br>(Ohms) |       | Frequency<br>min<br>(kHz) | Volt-time<br>product <sup>3</sup><br>(Vμsec) | Sensed<br>current I <sub>in</sub> <sup>4</sup><br>max (A) | Terminating<br>resistance R <sub>T</sub> <sup>5</sup><br>(Ohms) |
|--------------------------|----------------------|-------------------------------------|-------------------|-------|---------------------------|--|---|---|
|                          |                      |                                     | pri               | sec   |                           |  |   |   |
| ST511TCB1020L_           | 1:20                 | 0.053                               | 0.0015            | 0.420 | 78                        | 6.4  | 20  | 1.0   |
| ST511TCB1050L_           | 1:50                 | 0.333                               | 0.0015            | 2.76  | 31                        | 16.0   | 20  | 2.5   |
| ST511TCB1070L_           | 1:70                 | 0.652                               | 0.0015            | 5.04  | 22                        | 22.4   | 20  | 3.5   |
| ST511TCB1100L_           | 1:100                | 1.330                               | 0.0015            | 10.68 | 16                        | 32.0   | 20  | 5.0   |
| ST511TCB1150L_           | 1:150                | 2.993                               | 0.0015            | 22.30 | 10                        | 48.0   | 20  | 7.5   |

1. When ordering, please specify **screening** code:

↓  
**ST511TCB1150LZ**

**Screening:** Z = Unscreened

**H** = Group A screening per Coilcraft CP-SA-10001

- Screening performed to the document's latest revision.
- Lot qualification (Group B) available.
- Custom testing also available.
- Country of origin restrictions available; prefix option G.

2. Inductance measured between secondary pins at 100 kHz, 0.1 Vrms, 0 Adc.

3. Volt-time product is for the secondary, between pin 1 and 2.

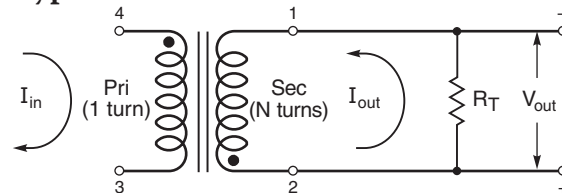
4. Primary current of 20 A causes less than 25°C temperature rise from 25°C ambient. Higher current causes a greater temperature rise (see Temperature Rise vs Current curve).

5. Terminating resistance (R<sub>T</sub>) value is based on 1 Volt output with 20 Amps flowing through the primary. Varying terminating resistance increases or decreases output Voltage/Ampere according to the following equation:  
 $R_T = V_{out} \times N_{sec} / I_{in}$

6. Electrical specifications at 25°C.

Refer to Doc 362 "Soldering Surface Mount Components" before soldering.

## Typical Circuit



**Core material** Ferrite

**Terminations** Tin-silver-copper over tin over nickel over phos bronze

**Weight** 0.16 g

**Ambient temperature** -40°C to +125°C

**Maximum part temperature** +165°C (ambient + temp rise)

**Storage temperature** Component: -55°C to +165°C.

Tape and reel packaging: -40°C to +80°C

**Resistance to soldering heat** Max three 40 second reflows at +260°C, parts cooled to room temperature between cycles

**Moisture Sensitivity Level (MSL)** 1 (unlimited floor life at <30°C / 85% relative humidity)

**Failures in Time (FIT) / Mean Time Between Failures (MTBF)** 10.06 per billion hours / 9.940E+07 hours, calculated per Telcordia SR-332

**Packaging** 600/7" reel; 2500/13" reel Plastic tape: 16 mm wide, 0.35 mm thick, 8 mm pocket spacing, 3.0 mm pocket depth

**PCB washing** Tested to MIL-STD-202 Method 215 plus an additional aqueous wash. See [Doc787\\_PCB\\_Washing.pdf](#).

**Coilcraft CPS**  
CRITICAL PRODUCTS & SERVICES

1102 Silver Lake Road  
Cary, IL 60013  
Phone 800-981-0363

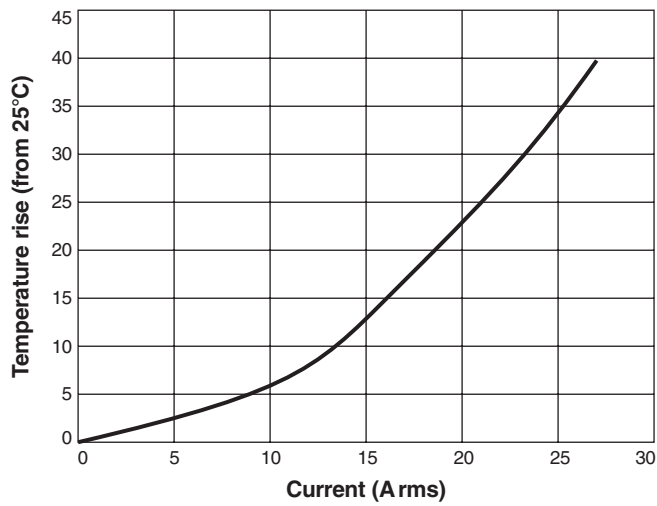
Fax 847-639-1508  
Email [cps@coilcraft.com](mailto:cps@coilcraft.com)  
[www.coilcraft-cps.com](http://www.coilcraft-cps.com)

Document ST1101-1 Revised 05/06/21

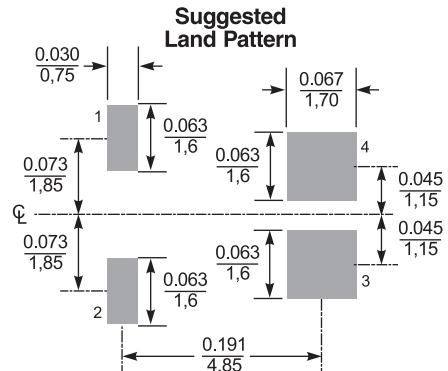
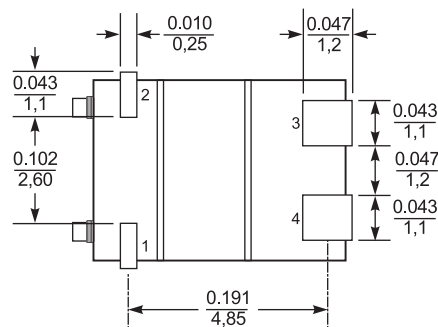
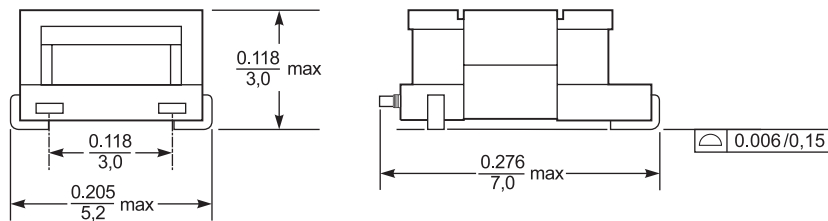
This product may not be used in medical or high risk applications without prior Coilcraft approval. Specifications subject to change without notice. Please check our web site for latest information.

# ST511TCB SMT Current Sense Transformers

## Temperature Rise vs Current



## Dimensions



Dimensions are in  $\frac{\text{inches}}{\text{mm}}$